



**EQUIPMENT FOR FAST REACTION  
- OPTIMAL SAFETY**



# EXTINGUISHING EQUIPMENT

Electric- Cars, Scooters, Lithium-ion batteries etc.

*October 2025 edition*



**Firefighter FF - Series**



October 2025 edition



**EQUIPMENT FOR FAST REACTION**  
**- OPTIMAL SAFETY**

## WHY USE WATER MIST ?

- The smoke from an Electrical-car on fire, is filled with extreme toxic and carcinogenic substances such as **Hydrogen fluoride, Hydrogen chloride, Hydrogen bromide og Formaldehyde.**
- From year 1980 to year 2000 there was a 100 % increase, in the use of plastic materials in cars, and that combined with Lithium-batteries i Electrical-cars , there is 4 times as many of these hazardous materiels in year 2023, compared with year 1980.
- This smoke which contains the toxic substances, is water soluble, and the more water mist you can apply and thereby also cool the car, the better working conditions for the Firefighters. They can now, from a safe distance, fight the fire with their powerfull fire hoses.
- The Jøni FF Fire Equipment is tested, using both cold and hot tests, in cooperation with DBI (Danish Fire & Safety Engineering Institute).
- An efficient and user-friendly system, where tests have shown that Firefighters very easely can use the equipment - even under totally dark conditions.





## The extinguishing equipment of the future - adapted to developments

Or tailored to specific needs, if you  
have special requirements or wishes

### **The Firefighter Type FF – series**

A revolutionary innovation for fighting car fires, and specially developed to limit fires in electric cars, electric scooters, Lithium batteries etc. The system are patented and the only ones of this type on the market.

The series consists of a number of products, specially developed and adapted to the demand for effective fire fighting solutions for electric cars, where spontaneous fire can occur - in the sides or corners of the battery box.

Charged or discharged, energy will always be present in an electric car battery, which is why a 99% water cooling in the event of a fire makes it possible to limit the development / spread of the fire.



**EQUIPMENT FOR FAST REACTION  
- OPTIMAL SAFETY**



## **Firefighter - FF126-137 VS2**

Firefighter - FF126-137 VS2 is a revolutionary new product for fighting car fires and specially and specially developed to limit the fire in electric cars. The systems are patented and the only ones of this type on the market.

Firefighter - FF126-137 VS2 is a handy version with an own weight less than 5 kg, and can be handled by all people. Firefighter - FF126-137 VS2 makes it simple to limit a fire that might occur in electric cars. The 4 reinforced sliding shoes underneath, allows the equipment to slide easily under the bottom of the car - and thereby cooling the bottom of the vehicle down.

Is is recommended that you use min. 2 pcs., so that you can drive one in from each side or from the front/rear, depending on the space around the car.

Fire hose C-2" is connected and at 4 bar water pressure each unit produces water mist with min. 137 Litres per minute for effective cooling of the batteries, as well as extinguishing open flames.

The handle is pivotable for easy handling and storage in everyday live.

The Firefighter FF126-137 VS2 can be expanded with several models, thereby increasing the cooling.





**EQUIPMENT FOR FAST REACTION  
- OPTIMAL SAFETY**



## Firefighter - FF126-137 VS2

### Specifications:

Length:..... 800 mm  
 Width:..... 420 mm  
 Height:..... 100 mm  
 Weight: ..... Less than 5 kg  
 Material:..... Aluminium  
 Handle:..... Pivotal (not electrically conductive)  
 Connections:..... 1 pcs Storz C-2"  
 Gliding shoes:..... 4 pcs in hardened steel  
 Nozzles:..... 26 pcs full cone  $\varnothing$ 2,4

|                            |     |      |      |      |      |      |      |       |
|----------------------------|-----|------|------|------|------|------|------|-------|
| Pressure in bar            | 0,5 | 1,00 | 2,00 | 3,00 | 4,00 | 5,00 | 7,00 | 10,00 |
| Water consumpt. liter/min. | 60  | 79   | 104  | 122  | 137  | 150  | 172  | 198   |





**EQUIPMENT FOR FAST REACTION  
- OPTIMAL SAFETY**



### **Firefighter - FF138-200**

Firefighter - FF138-200 is a further development of model FF126-137, this model is longer and therefore equipped with more spray nozzles. This means that it can limit a larger area of the fire and ensure greater cooling of the batteries in the electric car. This model is also patented and the only one of its kind on the market.

It can be used in tight spaces such as parking garages, and can be placed on emergency vehicles and thus used quickly and safely. Like the others it can be expanded with several models, and used for placement under the vehicle - both in front, behind and from the sides.





**EQUIPMENT FOR FAST REACTION  
- OPTIMAL SAFETY**



## Firefighter - FF138-200

### Specifications:

Length:.....1.780 mm  
 Width:..... 570 mm  
 Height:..... 100 mm  
 Weight: .....10 kg  
 Material:..... Aluminium  
 Handle:..... Pivotal (not electrically conductive)  
 Connections:..... 1 pcs Storz C-2"  
 Driving rings (wheels):..... 4 pcs ø60 brass  
 Nozzles:..... 38 pcs full cone ø2,4

| Pressure in bar            | 0,5 | 1,00 | 2,00 | 3,00 | 4,00 | 5,00 | 7,00 | 10,00 |
|----------------------------|-----|------|------|------|------|------|------|-------|
| Water consumpt. liter/min. | 87  | 115  | 152  | 179  | 200  | 219  | 251  | 289   |





**EQUIPMENT FOR FAST REACTION  
- OPTIMAL SAFETY**



**Firefighter - FF241-215**

Firefighter FF241-215 is an extended version of FF126-137, which with a length of 4,5 meter, cools the entire undercarriage effectively—and limits any fire that may occur.

The system can be advantageously placed on each side of the vehicle, thus encircling it with water mist.

Fire hose C-2" can be connected, which at 4 bar water pressure produces water mist with min. 215 Litres per minute.

A swinging handle and with mounted slide-shoes, facilitates handling and make storage easy. With a weight of 30 kg, it is handy but takes up more space than FF126-137.





## Firefighter - FF241-215

### Specifications:

Length:.....4.500 mm  
 Width:..... 900 mm  
 Height:..... 100 mm  
 Weight: .....10 kg  
 Turning radius:..... 3.410 mm  
 Material:..... Aluminium  
 Handle:..... Pivotal (not electrically conductive)  
 Connections:..... 2 pcs Storz C-2"  
 Driving rings (wheels):.....pcs ø80 directionally fixed  
 Nozzles:..... 41 pcs full cone ø2,4

| Pressure in bar            | 0,5 | 1,00 | 2,00 | 3,00 | 4,00 | 5,00 | 7,00 | 10,00 |
|----------------------------|-----|------|------|------|------|------|------|-------|
| Water consumpt. liter/min. | 94  | 124  | 164  | 193  | 215  | 237  | 271  | 312   |





## Firefighter - FF564-340

Firefighter FF564-340 is a further development of our FF241-215 and is an effective tool for use on ferries' car decks, to contain the fire. This ensures that the fire does not to other cars, as it produces watermist on both sides. It can be connected to the smaller models that are placed under the front and back, which forms a particularly powerful unit.

It's equipped with an insulated handle that can be locked in different angles during feed. It's easy to handle and is used for conveying between the rows of parked cars on the on the ferry deck, and with 4 bar pressure and 340 liters of water per minute, it provides an extremely powerful spray mist to both sides.





**EQUIPMENT FOR FAST REACTION  
- OPTIMAL SAFETY**



**Firefighter - FF564-340**

**Specifications:**

Length:.....3.200 mm  
 Width:..... 275 mm  
 Height:..... 1.520 mm  
 Weight: .....33 kg  
 Material:..... Aluminium  
 Handle:..... Pivotal (not electrically conductive)  
 Connections:..... 3 pcs Storz C-2"  
 Driving rings (wheels):..... 4 pcs ø100 ALU  
 Nozzles:..... 64 pcs full cone ø2,4

|                            |     |      |      |      |      |      |      |       |
|----------------------------|-----|------|------|------|------|------|------|-------|
| Pressure in bar            | 0,5 | 1,00 | 2,00 | 3,00 | 4,00 | 5,00 | 7,00 | 10,00 |
| Water consumpt. liter/min. | 144 | 192  | 256  | 303  | 340  | 376  | 433  | 503   |





**EQUIPMENT FOR FAST REACTION  
- OPTIMAL SAFETY**



**Firefighter - FF4134- 886, Ferry kit model 1**

Consisting of 2 pcs FF441-215\* + 2 pcs FF126-137

**Firefighter - FF5180-1210, Ferry kit model 2**

Consisting of 2 pcs FF564-340 + 2 pcs FF126-137

Firefighter ferry kit **model 1 and model 2** are revolutionary novelties for fighting car fires, and specially developed to limit, contain or extinguish the fire in electric cars. The systems are patented and the only ones of this type on the market.

Both Firefighter ferry kits works as a single unit, that can easily and effectively surround the burning vehicle with watermist.

The differens between the 2 ferry kits, is that **Model 2** also sends a strong water mist towards the 2 cars standing next to the burning car.

With the ferry kit **model 1**, a total water mist of 704 liters per minute is achived with just 4 bar pressure.

With the ferry kit **model 2**, a total water mist of 954 liters per minute is achived with just 4 bar pressure.

Pivoting handle and fitted sliting shoes, fa-cillitate handling and make storage easy. With a low net weight—the units are easy to place.

\*FF441-215 is actually produced as a model FF241-215, but with 2 pcs ball valves installed.







**EQUIPMENT FOR FAST REACTION  
- OPTIMAL SAFETY**



**Firefighter - FF5180-1210, Ferry kit model 2**

Consisting of 2 pcs FF564-340 + 2 pcs FF126-137 VS2

**Specifikationer:**

- Length:.....3.200 mm
- Width:..... 275 mm
- Height:..... 1.520 mm
- Material:..... Aluminium
- Handle:..... Pivotal (not electrically conductive)
- Connections:..... 3 pcs Storz C-2" with 1 pcs ball valve  
Connects with hoses on the front and rear section
- Wheels:..... 4 pcs ø100 ALU on unit FF564-340
- Nozzles:..... 128+52 pcs full cone ø2,4

|                            |     |      |      |      |      |      |      |       |
|----------------------------|-----|------|------|------|------|------|------|-------|
| Pressure in bar            | 0,5 | 1,00 | 2,00 | 3,00 | 4,00 | 5,00 | 7,00 | 10,00 |
| Water consumpt. liter/min. | 408 | 542  | 720  | 850  | 954  | 1052 | 1210 | 1402  |



**FF564-340**



**FF126-137 VS2**



## Firefighter- EV Fire Gun

After the first fire fight, the battery's heat development is checked with a thermal camera. If the temperature is abnormally high (Thermal Runaway), the EV Fire Gun can be used with great efficiency.

This newly developed tool is used to penetrate the battery box and fill it with water, thereby extinguishing the fire in the battery box. Many tests have shown that it is An effective way to ensure that the fire does not spread. It can deliver 40 liters of water per minute at 2 bar.





**EQUIPMENT FOR FAST REACTION  
- OPTIMAL SAFETY**



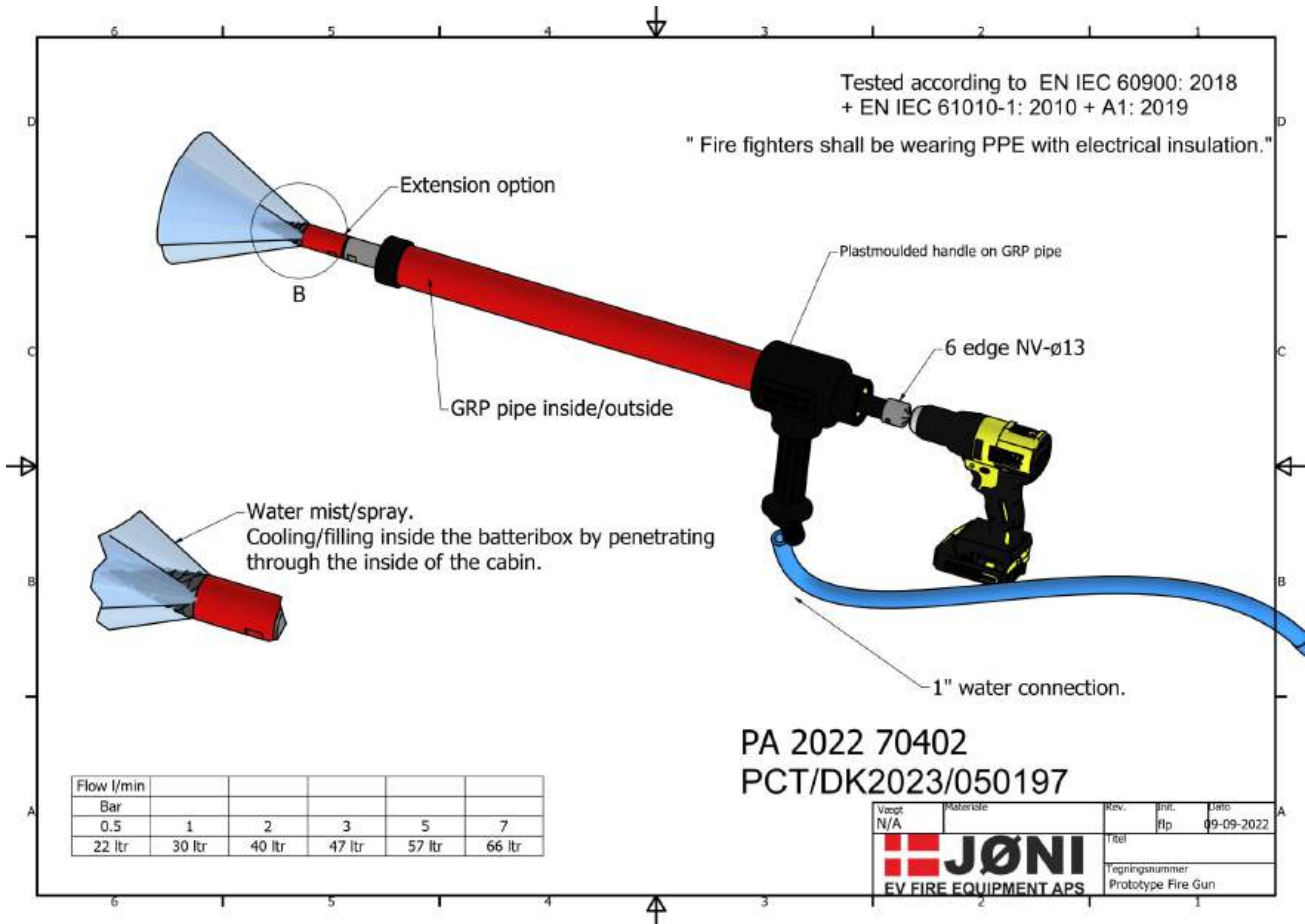
## Firefighter - EV Fire Gun



**EQUIPMENT FOR FAST REACTION  
- OPTIMAL SAFETY**



**Firefighter- EV Fire Gun**





**EQUIPMENT FOR FAST REACTION  
- OPTIMAL SAFETY**



**Firefighter- EV Fire Gun**



**Jøni Pressure Reducer**





## Firefighter- EV Fire Gun

It is easy to find space for the Fire Gun and FF126-137 in the fire truck



**EQUIPMENT FOR FAST REACTION  
- OPTIMAL SAFETY**

**Jøni Fire Gun can also be used for, among other things:**



**Fires in floorseparations**



**Fires in roof panels and rafters**



**Fires in wooden buildings, tool sheds, etc.**



**Fires in ship cabins, e.g. by penetrating a ship window**



**Fires in containers**



**Fires in machinery**



**Fires in BESS facilities**



# Use the FIRE GUN to cover a bigger surface with Jøni Wall Expander Connector - handsfree solution

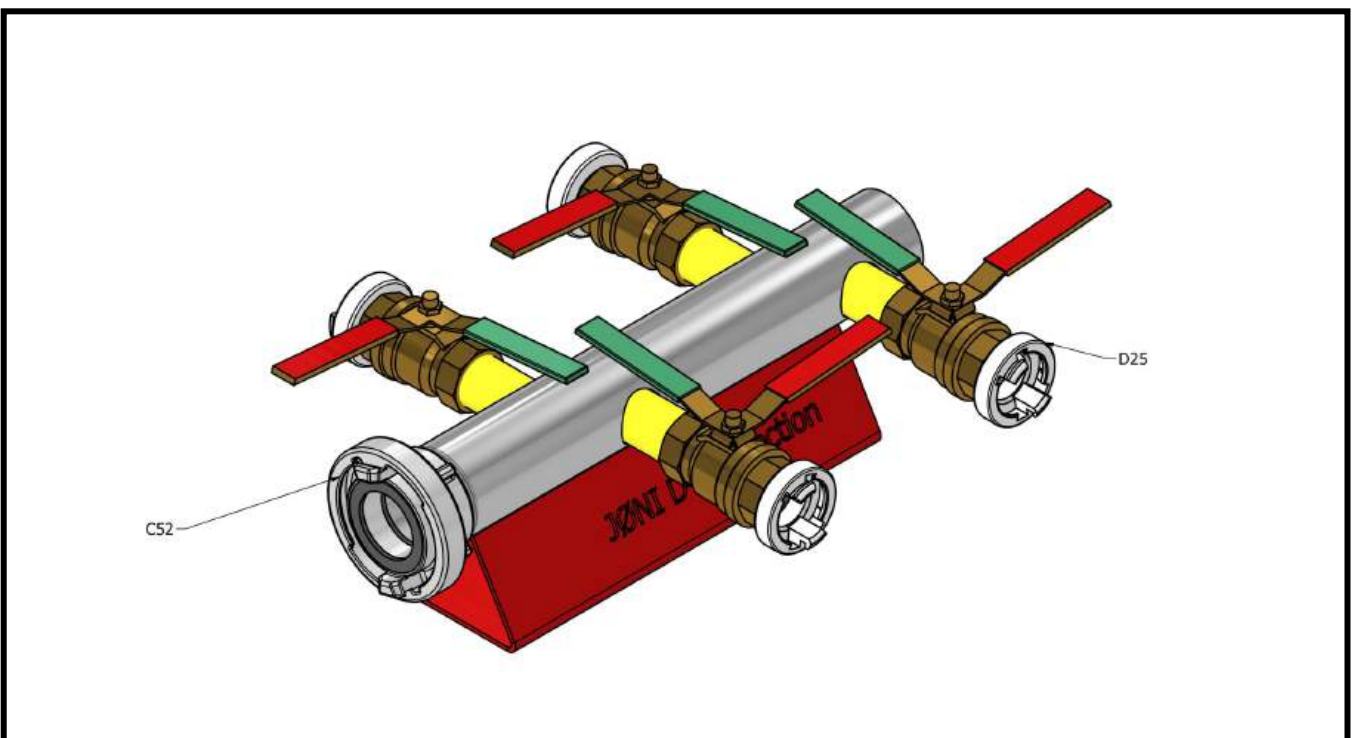
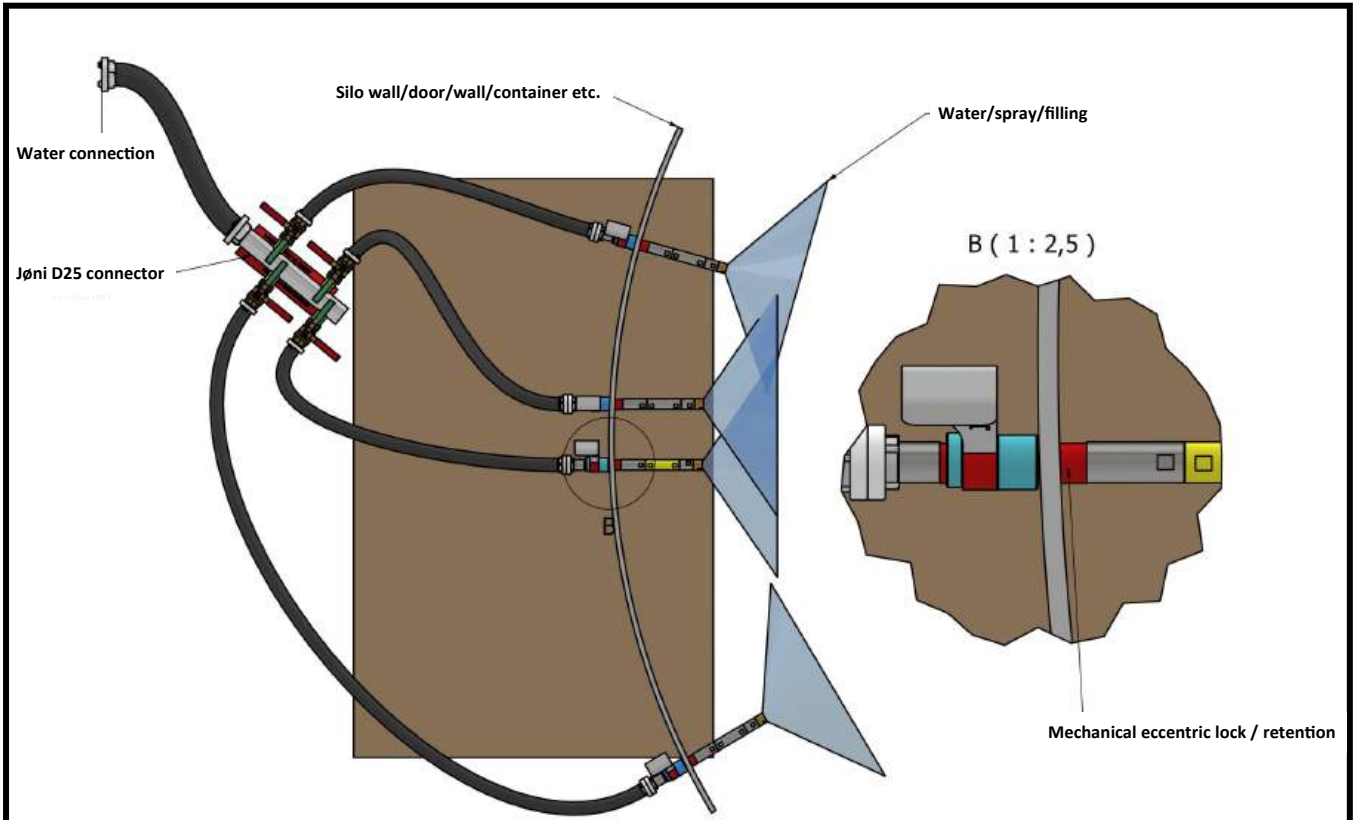
|              | Full cone nozzle 120 degree |     |     |     |     |     |     |      |
|--------------|-----------------------------|-----|-----|-----|-----|-----|-----|------|
| Pressure bar | 0,5                         | 1,0 | 2,0 | 3,0 | 4,0 | 5,0 | 7,0 | 10,0 |
| L/min        | 23                          | 30  | 40  | 47  | 51  | 56  | 66  | 76   |



**EQUIPMENT FOR FAST REACTION  
- OPTIMAL SAFETY**



**Use the FIRE GUN to cover a bigger surface with  
Jøni Wall Expander Connector - handsfree solution**





### **Jøni Self-driven Fire Gun**

Should be used for all enclosed spaces where there is a risk of a flue gas explosion, such as BESS facilities.

To penetrate fire doors, ISO containers and facades to other enclosed spaces, so that firefighters are not exposed to the risk of explosion.

Can also be used on tanks - to make a hole for a suction hose.



**Jøni Self-driven Fire Gun**

The specially developed Fire Gun "mini" - in the white circle



The flat vacuum plate is used like this - on a BD30 fire door



The curved vacuum plate is used like this - on a 20" ISO container



## EV Firecontrol Container

The EV Firecontrol Container is available in 6 standard versions, with different configurations, adapted to the customer's needs.





## EV Firecontrol Container





**EQUIPMENT FOR FAST REACTION  
- OPTIMAL SAFETY**



**EV Firecontrol Container**





## EV Firecontrol Container





**EQUIPMENT FOR FAST REACTION  
- OPTIMAL SAFETY**



**Jøni Battery Fire Control Container - meets the legal requirements for the storage of EV battery packs**





**LUF Container**  
manufactured according to requirements and wishes from  
Beredskab & Sikkerhed, Randers • Favrskov • Djursland





**EQUIPMENT FOR FAST REACTION  
- OPTIMAL SAFETY**



**LUF Container  
manufactured according to requirements and wishes from  
Beredskab & Sikkerhed, Randers • Favrskov • Djursland**





**EQUIPMENT FOR FAST REACTION  
- OPTIMAL SAFETY**



**LUF Container  
manufactured according to requirements and wishes from  
Beredskab & Sikkerhed, Randers • Favrskov • Djursland**





**EQUIPMENT FOR FAST REACTION  
- OPTIMAL SAFETY**



## **Alu transport platform for Slagelse Fire & Rescue**





**EQUIPMENT FOR FAST REACTION  
- OPTIMAL SAFETY**



**Specially equipped alu platform with Warning flash etc.**





**Jøni Practice container, Chemistry**

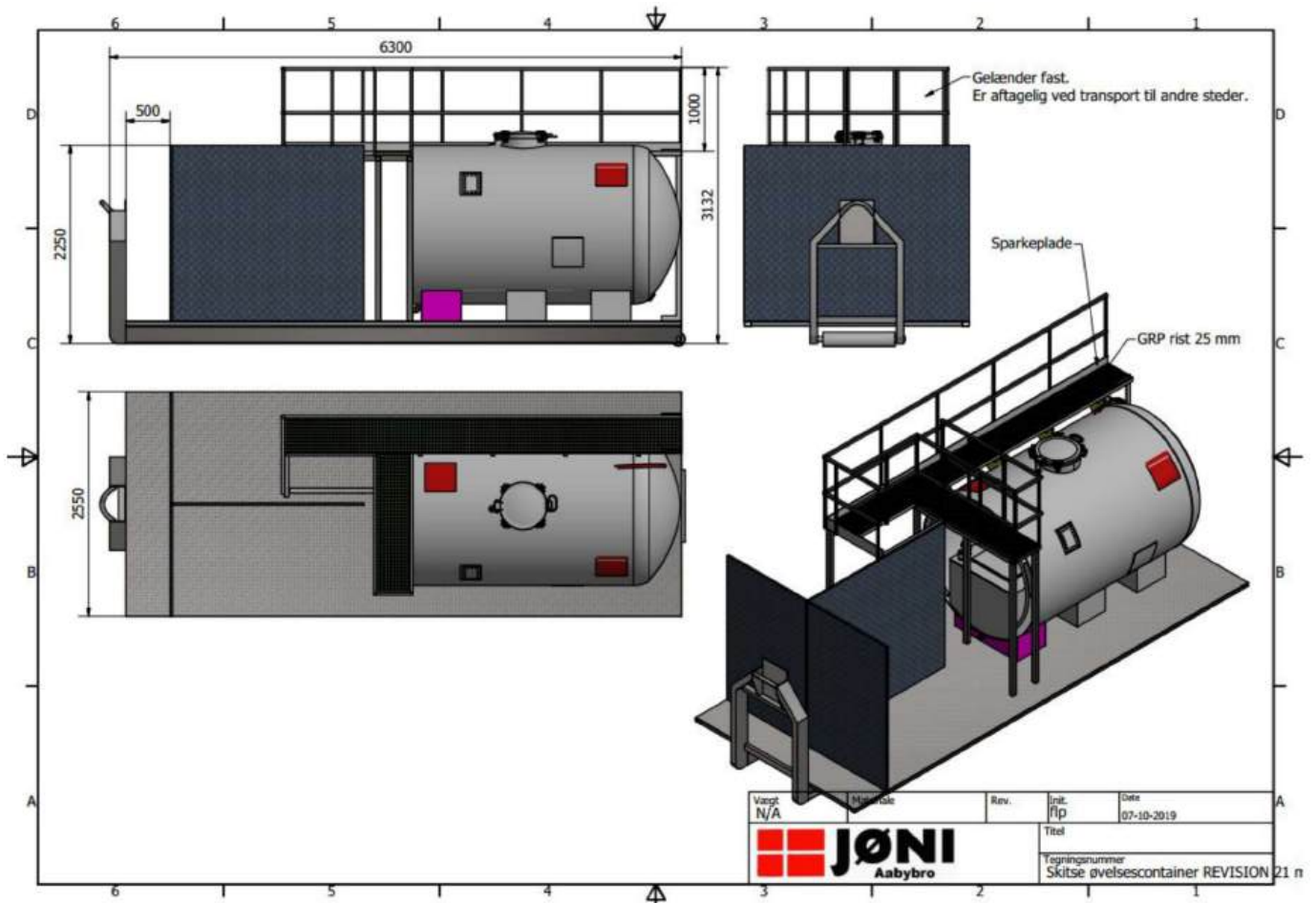




**EQUIPMENT FOR FAST REACTION  
- OPTIMAL SAFETY**



**Jøni Practice container, Chemistry**





**EQUIPMENT FOR FAST REACTION  
- OPTIMAL SAFETY**



## **Firefighter patents**

|   |  |
|---|--|
| <b>EV FIRE GUN 30/40 LITER PER MIN.</b> | <b>PA 2022 70402</b>   |
| <b>Firefighter: FF126-137 VS2</b>       | <b>EF-Design: 009081870-004 / UK-Design: 6222071<br/>NO-Design: 009081870-0004</b> |
| <b>Firefighter: FF138-200</b>           | <b>EF-Design: 009081870-003 / UK-Design: 6222070<br/>NO-Design: 009081870-0003</b> |
| <b>Firefighter: FF241-215</b>           | <b>EF-Design: 009081870-001 / UK-Design: 6222068<br/>NO-Design: 009081780-0001</b> |
| <b>Firefighter: FF564-340</b>           | <b>EF-Design: 009081870-002 / UK-Design: 6222069<br/>NO-Design: 009081870-0002</b> |
| <b>Firefighter: FF383-457</b>           | <b>Patent nr. DK 180794<br/>PCT/DK2021/050050</b>                                  |
| <b>Robotic Transporter:</b>             | <b>PA 2021 70468.</b>  |



 **JØNI**  
**EV FIRE EQUIPMENT APS**

**Mølhavevej 1, 9440 Aabybro  
Danmark**

**Tlf: +45 9824 1911**

**CVR: 4286 0441**

**Mail: [JV@joeni-as.dk](mailto:JV@joeni-as.dk)**

**[www.joeni-as.dk](http://www.joeni-as.dk)**

**Edition: January 2025**